

Web Essentials

ENGAGING APPLICATIONS FOR HUNTER CENTRAL COAST CLASSROOMS

Are you going to the
1:1 Learning
Unconference?

JUNE 20-21, 2011
SYDNEY CONVENTION CENTRE
DARLING HARBOUR

REGISTER
HERE

<http://1to1learningunconference.edublogs.org/>

Visit our Laptop Support COW

The Laptop Support COW is one of the Hunter Central Coast Regional COWs (Collaborative Online Workspaces).

Access

Access the COWs via the link on the HCC Regional Intranet:

https://detwww.det.nsw.edu.au/regions/hunter_ccoast/

Login with your DET portal username with the suffix @det

e.g. Jennifer.Wise@det

CONTACT DETAILS

Justine Abell

Rel. Regional Strategy Support Officer

Hunter Central Coast Region

Adamstown Office

E: justine.abell@det.nsw.edu.au

P: (02) 4904 3915

Grant Ward

DER Project Officer

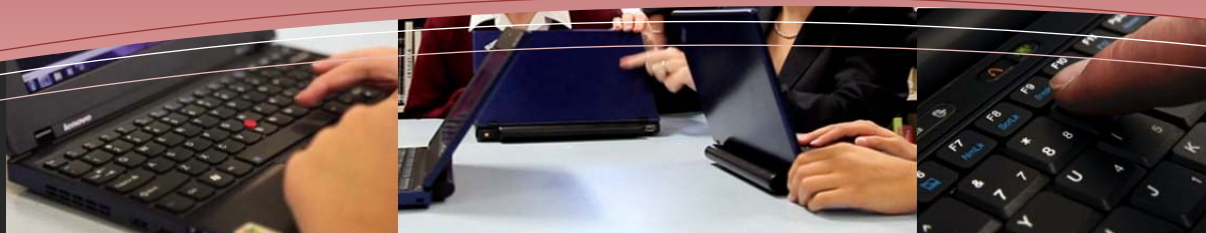
Hunter Central Coast Region

Adamstown Office

E: grant.ward@det.nsw.edu.au

P: (02) 4904 3919

M: 0447 107 946



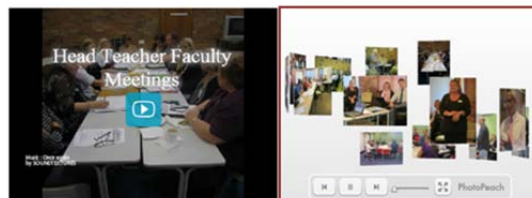
Creating Slideshows using



What is 'PhotoPeach'?

'PhotoPeach' is a web-based application designed to create 'slideshows' from photos that you provide. You can share your slideshow with other people via email or through social media such as Facebook or you can embed your slideshow into your website, blog or moodle.

What does a 'PhotoPeach' slideshow look like?



Above: Two display examples of the same 'PhotoPeach' slideshow created from photos taken at the recent Head Teacher Network Meeting at Kurri Kurri TAFE, May 2011

Where can I find PhotoPeach?

'PhotoPeach' is located at the following URL:
<http://photopeach.com/>

What does PhotoPeach cost?

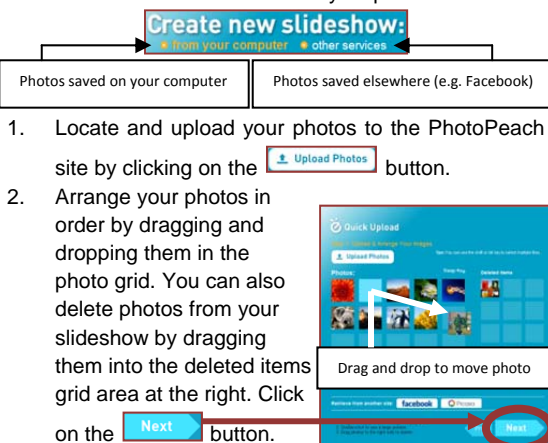
Nothing. PhotoPeach is a free application.

Do I need a PhotoPeach account?

Yes. You can create a free PhotoPeach account that will allow you to create your own slideshows (30 photo limit). A 'Premium' account (\$3/mnth) will give you a number of extra options when creating slideshows, including the ability to download your slideshows to keep.

How does PhotoPeach work?

After you create a PhotoPeach account you can create a PhotoPeach slideshow in four easy steps:

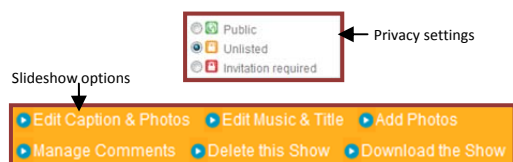


3. Give your slideshow a title and add some music from the built-in music library (or from Youtube).

4. Click on the **Finish** button to create and watch your slideshow.

Can I format my PhotoPeach slideshow?

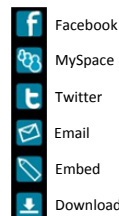
Yes. You have some options that allow you to format or 'personalise' your PhotoPeach slideshow including adding and positioning captions or quiz questions to your photos, changing the speed of your slideshow and setting your slideshow privacy level:



How do I share my PhotoPeach slideshow?

There are a few ways you can share your PhotoPeach slideshow with others:

1. Share it on a social networking site such as Facebook, MySpace or Twitter.
2. Email it to a friend.
3. Embed it in a blog, website, Moodle, etc. using the embed code. Your slideshow can be embedded as either a slideshow or a spiralling series of photos that can be clicked on for closer viewing.



How can I integrate PhotoPeach into my teaching program?

There are endless opportunities for the relevant integration of PhotoPeach into your teaching program, particularly considering it is a presentation application and only requires a series of still photos. Here are three ideas that you might like to try using PhotoPeach for in your classroom:

1. Presenting an overview

Create a visual presentation of a school event (excursion, ceremony, carnival, etc.) or retell the events in a factual or fictitious story studied by the class group.

2. Outlining a process

Have students demonstrate a specific step-by-step process (e.g. constructing something, conducting an experiment, completing a project, etc.)

3. Responding to a stimulus

Utilise the power of images to create a scene scape that carries a unique message or evokes a strong emotion (e.g. based on current affairs or a controversial issue).

Next Issue: Creating a poster using Glogster



Digital Education Revolution ►► NSW



Education & Communities